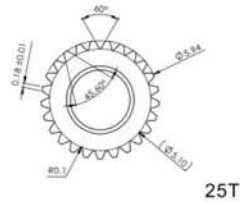
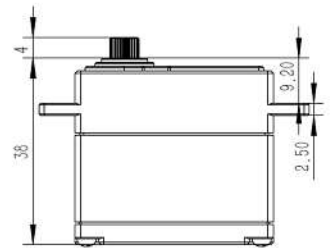
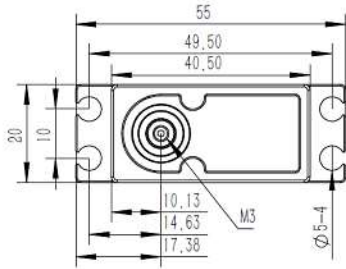


CM3510MG V6.0 Technical Specification



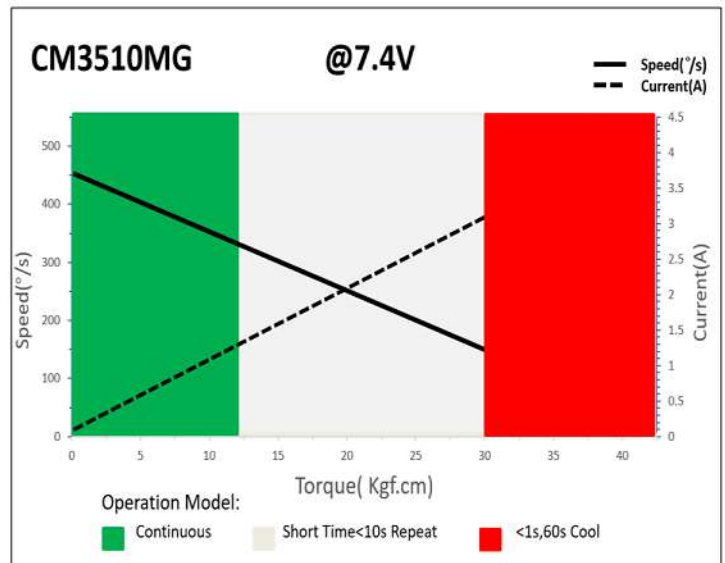
6mm25T Output Shaft Spline



1. Operating Data

Rated Voltage	DC7.4V
Voltage Range	DC4.8V-8.4V
Stalling Torque	20Kgf.cm@4.8V
	25Kgf.cm@6.0V
	30Kgf.cm@7.4V
	35Kgf.cm@8.4V
Speed	0.20sec/60°@4.8V
	0.15sec/60°@6.0V
	0.13sec/60°@7.4V
	0.10sec/60°@8.4V
Current	2.10A@4.8V
	2.90A@6.0V
	3.30A@7.4V
	3.65A@8.4V
Working Frequency	1520us/333Hz
Default Travel Angle	±50° =100° Total
Temperature Range	-10°C.....+65°C
Soft Start	Programmable
Programmable	Yes
Motor Type	Coreless DC Motor
Gear Set Material	Hardened Steel Gear
Position Sensor	Potentiometer
Ball Bearing	2BB
Waterproof	IP65
Case Dimensions	40.5mm*20mm*38mm±0.2mm
Case Material:	CNC Aluminum Case
Weight	70g±10%

2. Performance



3. Command signal PWM Command Interface

Signal Voltage	HIGH: min.3.3V, max.5.0V Low: min.0.0V, max.1.5V
Pulse Lengths	900us-2100us
Pulse Lengths for Position	1000us/1500us/2000us
	-50°/ 0°/+50°

4. Electrical Connection

Pin Assignment			
	1	Orange	Signal PWM Command
	2	Red	DC+ Supply Voltage
	3	Brown	DC- Supply Ground