



ELECTRO SAILPLANE

Bliss

Manufactured by:

TOPMODEL CZ

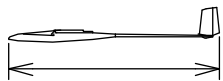
679 05 HABRŮVKA 100 - CZECH REPUBLIC

www.topmodelcz.com

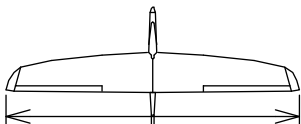
e-mail: info@topmodelcz.cz

Order N°: 02061

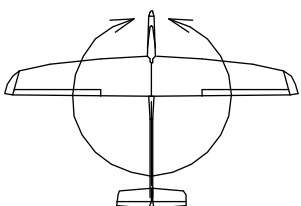
Radio system you'll need :



1195mm



1970mm

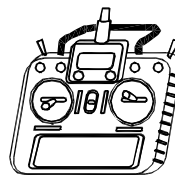


35,8dm²

21-23,7g/dm²



0,75 - 0,85kg



aileron - 2 servos
elevator
rudder
motor



MIG AC 400/14



2S Lixx



MH 32mod.

*Není-li uvedeno jinak, všechny
neoznačené míry jsou v milimetrech*
UNLES STATED, ALL DIMENSIONS
ARE IN MILIMETERS

GB - USA **Parts list**

Part #	Part name	Material, dimensions	Loose	In bag
	building instruction		01	-
1A	fuselage front part	fibreglass	01	-
1B	fuselage tube	fibreglass	01	-
1-1	motor mount	fibreglass	-	01
1-2	servo tray V-tail	plywood 4 mm	-	01
1-3	air hole cover	ABS	-	01
2	wing	balsa assembly	03	-
2-1	aileron	balsa	02	-
24	wing joiner	steel Ø 4 mm	-	02
2-2	wing fixing screw	screw M 4 x 16 mm	-	01
2-21	centering pin	fibreglass Ø 2 x 22 mm	-	02
2-25	centering pin	fibreglass Ø 4 x 40 mm	-	01
2-3	nut	Al M4	-	01
2-31	nut mount	plywood 3 x 20 x 35 mm	-	01
2-4	servo mount	polyurethan	-	04
2-41	wing servo cover	ABS plastic	-	02
2-5	aileron-flap pushrod	piano wire	-	02
2-7	clevis	MPJ 2110	-	02
2-8	aileron horn	fibreglass plate 1 mm	-	02
3	V-tail	balsa assembly	02	-
3A	V-tail mount	plywood 4 mm	-	01
3-3	V-tail joiner	fibreglass 1,5x11x42 mm	-	01
3-5	V-tail link	bowden Ø2 mm L=750mm, piano wire Ø0,8 mm L= 850mm	02+02	-
3-6	threaded coupler	MPJ 2012	-	02
3-7	clevis	MPJ 2110	-	02
3-8	horn	fibreglass plate 1 mm	-	02
6	canopy	fibreglass	01	-
6-2	canopy fixing	wood screw Ø2,9x6,5 mm	-	01
7	stickers		04	

RECOMMENDED EQUIPMENT				
		Pieces		Item No. www.topmodelcz.com
transmitter	4 channel			
reciever	5 channel			
servo	Dymond D60	2	for ailerons	020D1816
	HS-65HB	2	for elevator & rudder	1HI3177
motor	MIG AC 400/14	1		25414001
controller	FOXY R-25B	1		1RC21010
spinner	Alu kužel 30/3,17/8	1		0201503
propeller	CAMcarbon 9x5"	1		723419
battery	2S - 2-2,2Ah	1		

ATTENTION!

This model construction kit is not a toy and is not suitable for children under the age of 14. Incorrect use of this model could cause material damage or personal injury. You are fully responsible for your actions when you use this model.

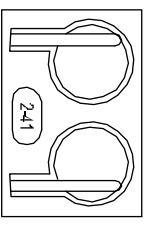
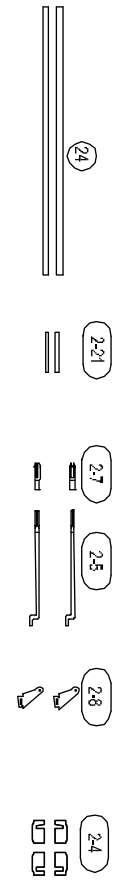
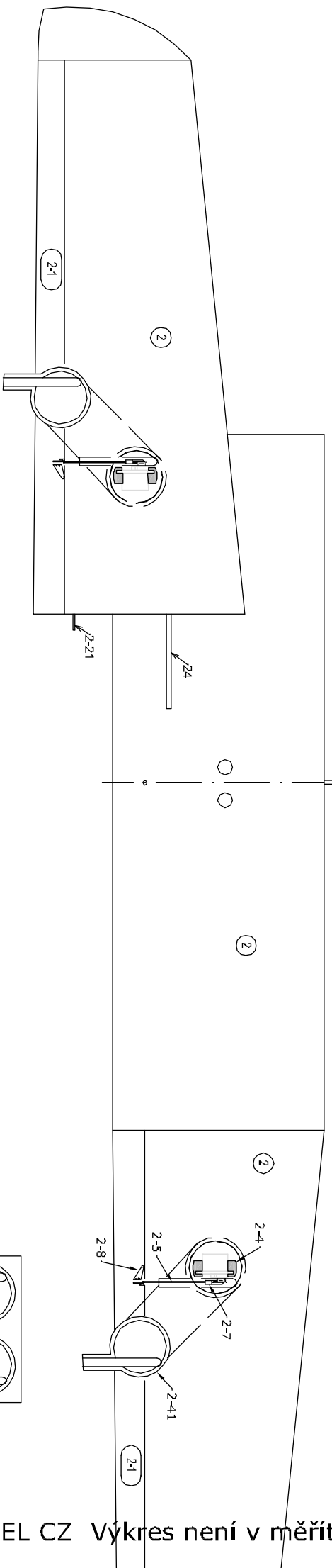
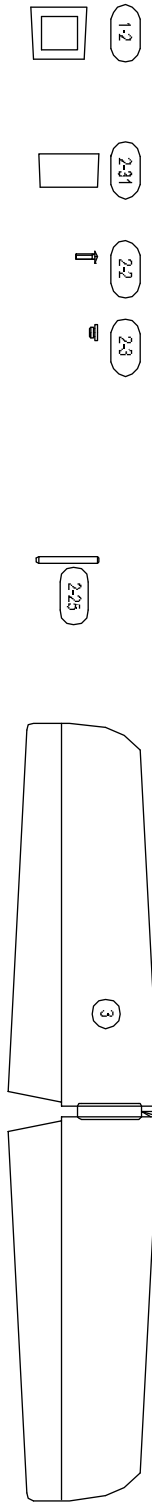
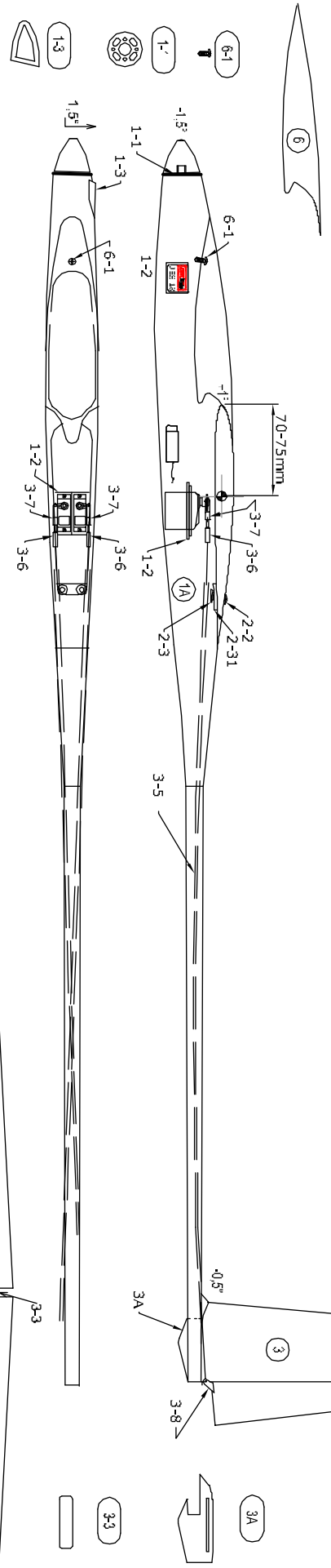
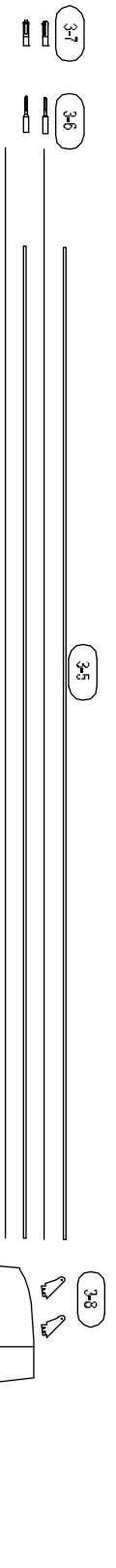
Fly at a safe distance from occupied zones. Before switching on the radio, be sure, that no one else is using the same frequency as you !

Before first take-off check up please the center of gravity, the sense and size of the control surface angle and if model aeroplane parts aren't crooked. The reparation is possible through the use of hot-air dryer.

Položka	Název dílu	Materiál, rozměr	Volně / ks	Balíček/ ks
	montážní návod		01	-
1A	trup gondola	laminát	01	-
1B	nosník ocasních ploch	laminát	01	-
1-1	motorová přepážka	sklotextit	-	01
1-2	držák serv	překližka. 4 mm	-	01
1-3	vstup vzduchu	ABS	-	01
2	křídlo	balsa konstrukční	03	-
24	spojka křídla	ocel Ø4mm	-	02
2-1	křídélko	balsa	02	-
2-2	uchycení křídla	šroub nylon M 4 x 16 mm	-	01
2-21	aretační kolík	Sklotextit Ø 2 x 22mm	-	02
2-25	uchycení křídla	laminát Ø 4 mm l = 40 mm	-	01
2-3	uchycení křídla	matice M 4	-	01
2-31	podložka matice	překližka. 3 x 20 x 35 mm	-	01
2-4	držák serva	polyuretan	-	04
2-41	krytka serva	ABS folie Ø 57 mm	-	02
2-5	táhlo křídélka	drát Ø 2	-	02
2-7	koncovka táhla	MPJ 2110	-	02
2-8	páka křídélka	sklotextit 1 mm	-	02
3	OP	balsa	01	-
3A	pylon OP	překližka 4 mm	01	-
3-3	spojka OP	sklotextit 1,5 x 11 x 42 mm	-	01
3-5	táhlo OP	bowden Ø 2 L=750 mm ocel Ø 0,8 L= 850 mm	-	02+02
3-6	spojka táhla	mosaz	-	02
3-7	koncovka táhla	MPJ 2110	-	02
3-8	páka OP	sklotextit 1 mm	-	02
6	kabina	laminát	01	-
6-1	uchycení kabiny	vrut Ø 2,9 x 6,5 mm	-	01
7	obtisky		04	-

DOPORUČENÉ PŘÍSLUŠENSTVÍ				
		Kusů		Obj.č. www.topmodelcz.com
vyjílač	4 kanál			
přijímač	5 kanál			
servo	Dymond D60	2	pro křídélka a klapky	020D1816
	HS-65HB	2	pro výškovku a směrovku	1HI3177
motor	MIG AC 400/14	1		25414001
regulátor	FOXY R-25B	1		1RC21010
kužel	Alu kužel 30/3,17/8	1		0201503
vrtule	CAMcarbon 9x5"	1		723419
akumulátor	2S - 2-2,2Ah	1		

Před prvním startem zkontrolujte jestli nejsou díly modelu zkroucené.
 Náprava je možná pomocí horkovzdušné pistole.
 Dále zkontrolujte polohu těžiště, smysl a velikost výchylek kormidel.

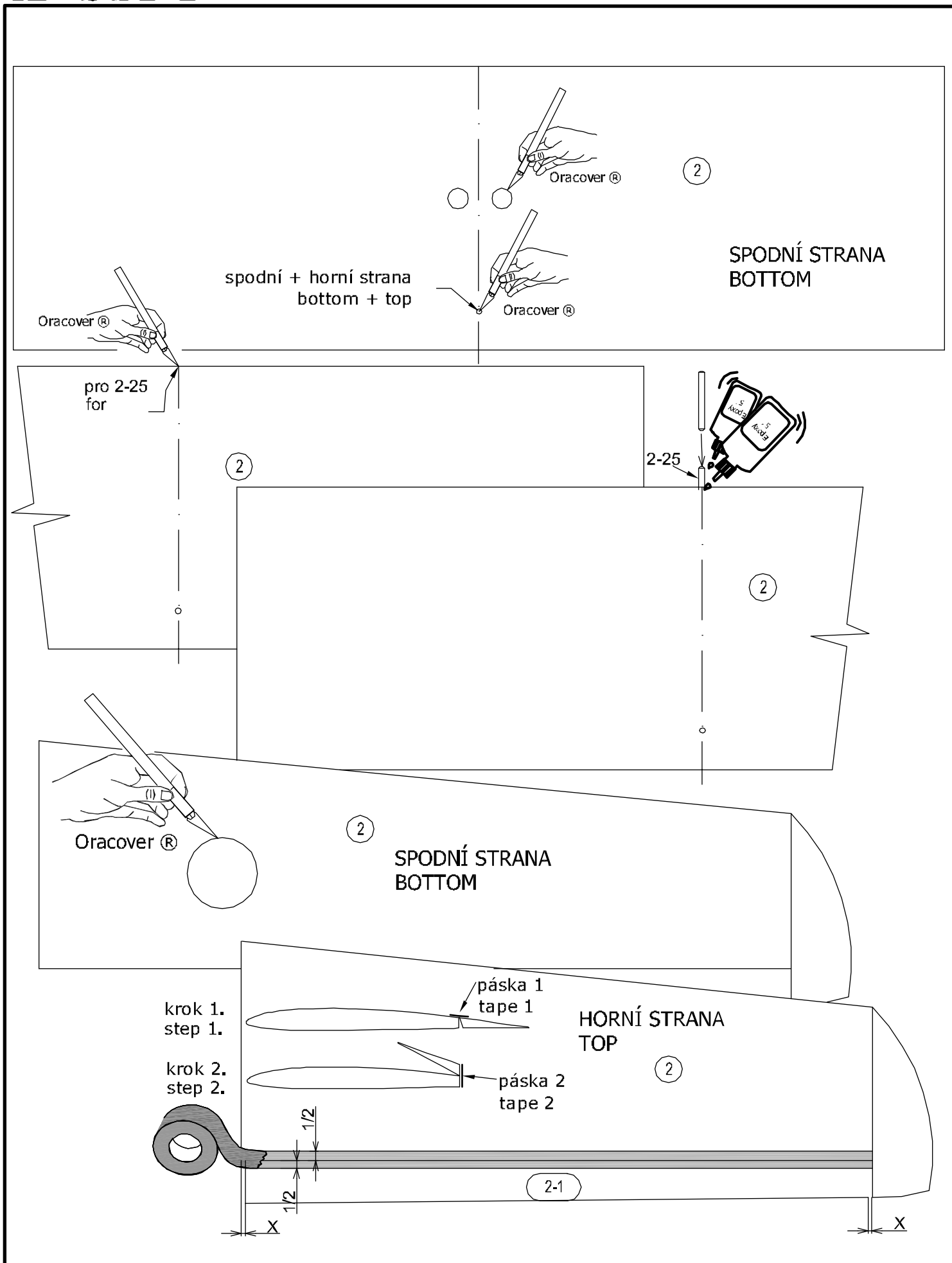


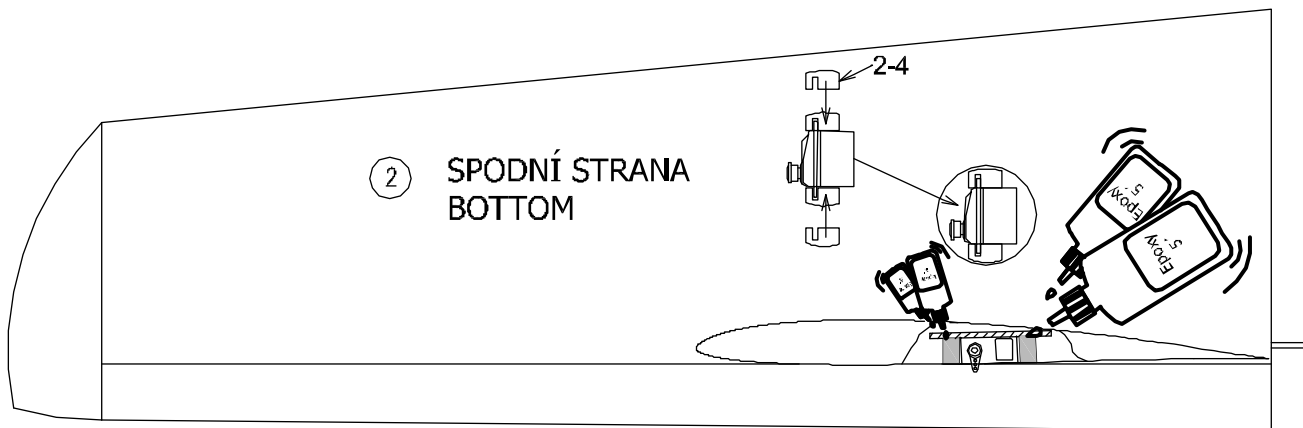
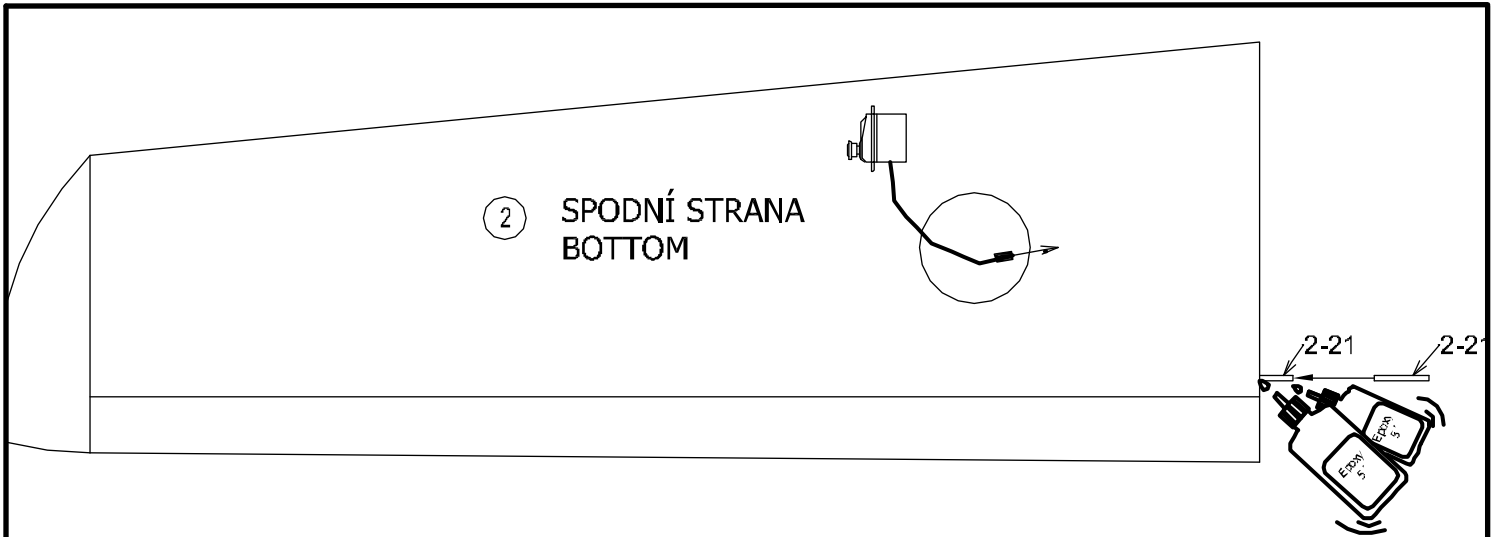
IBLiss

© TOPMODEL CZ Manufactured by TOPMODEL CZ s.r.o. 679 05 HABRŮVKA 100 - Better made in the Czech Republic
 www.topmodelcz.com e-mail: info@topmodelcz.cz

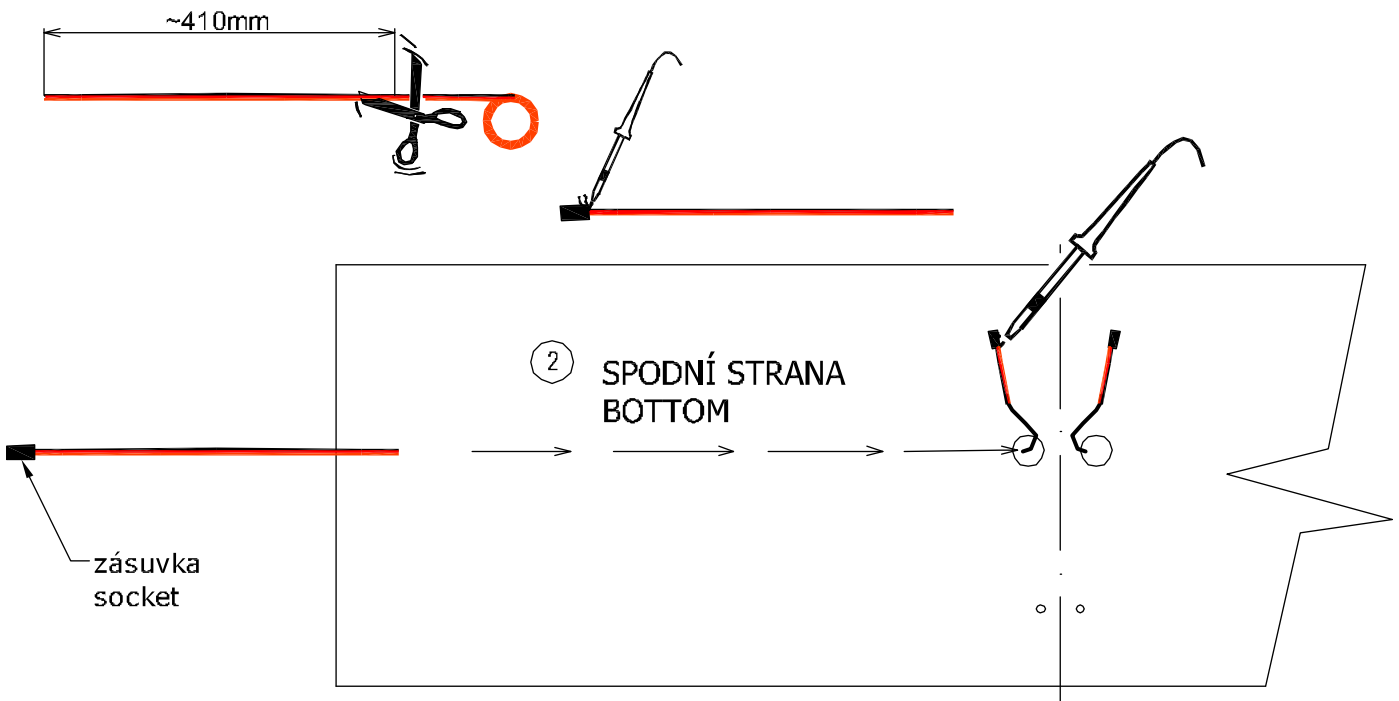
TOPMODEL CZ

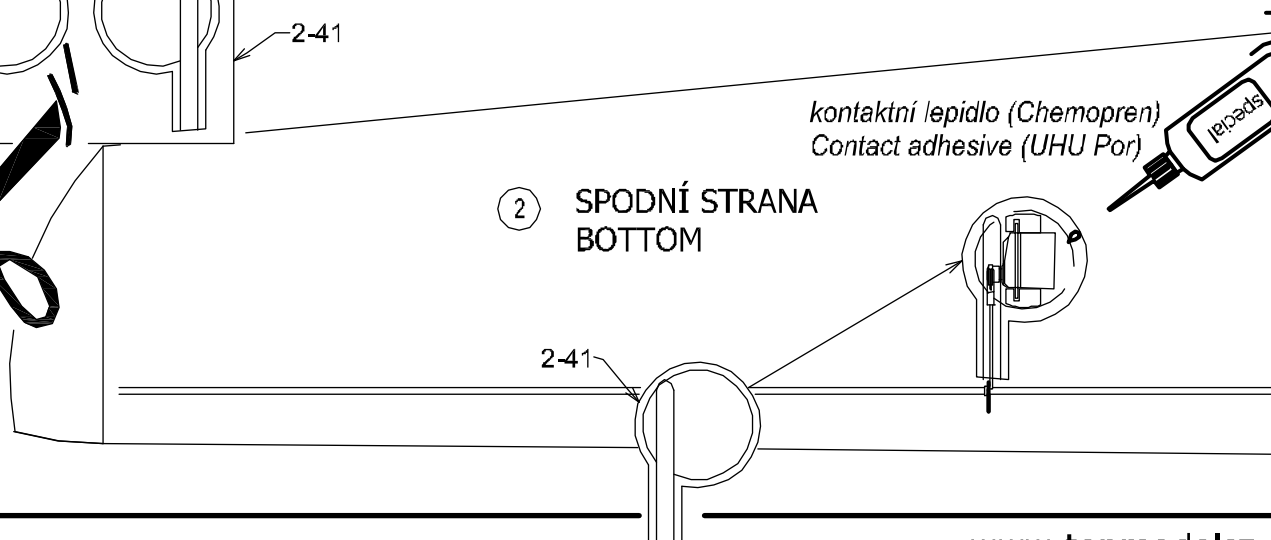
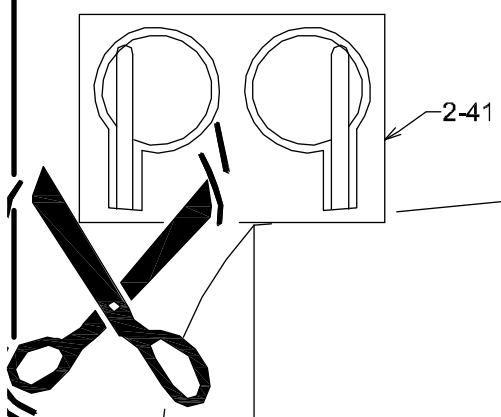
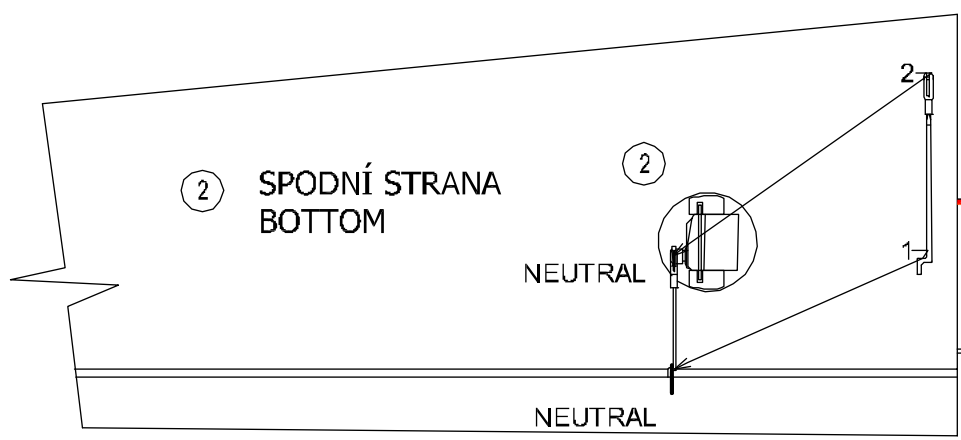
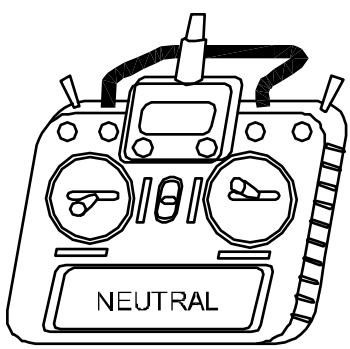
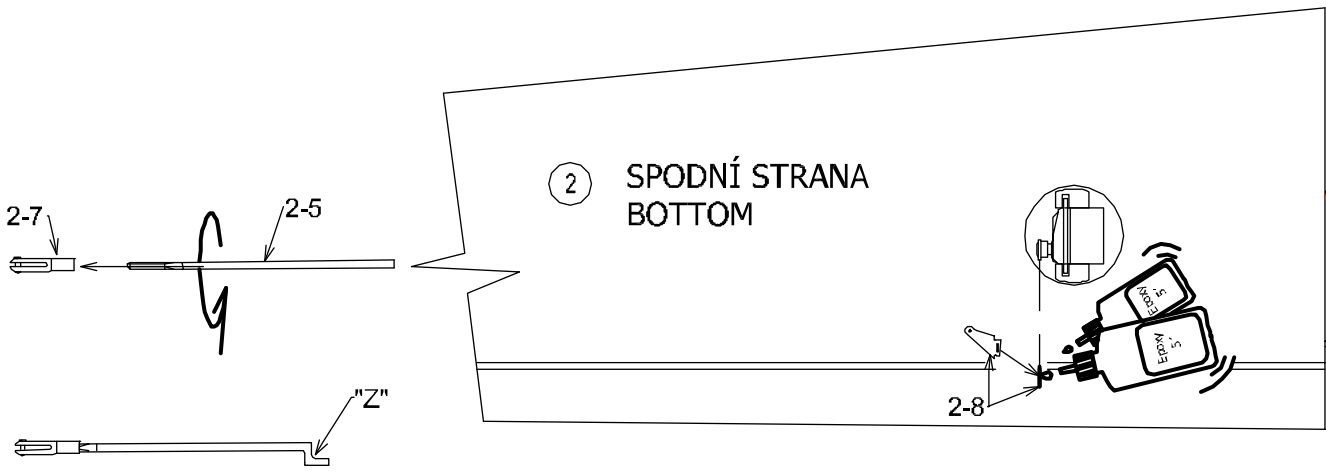
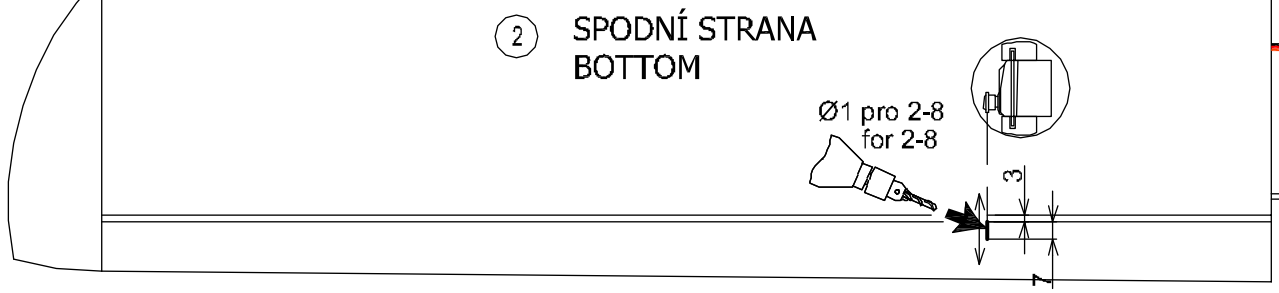
© TOPMODEL CZ Výkres není v měřítku - Not scale !!!

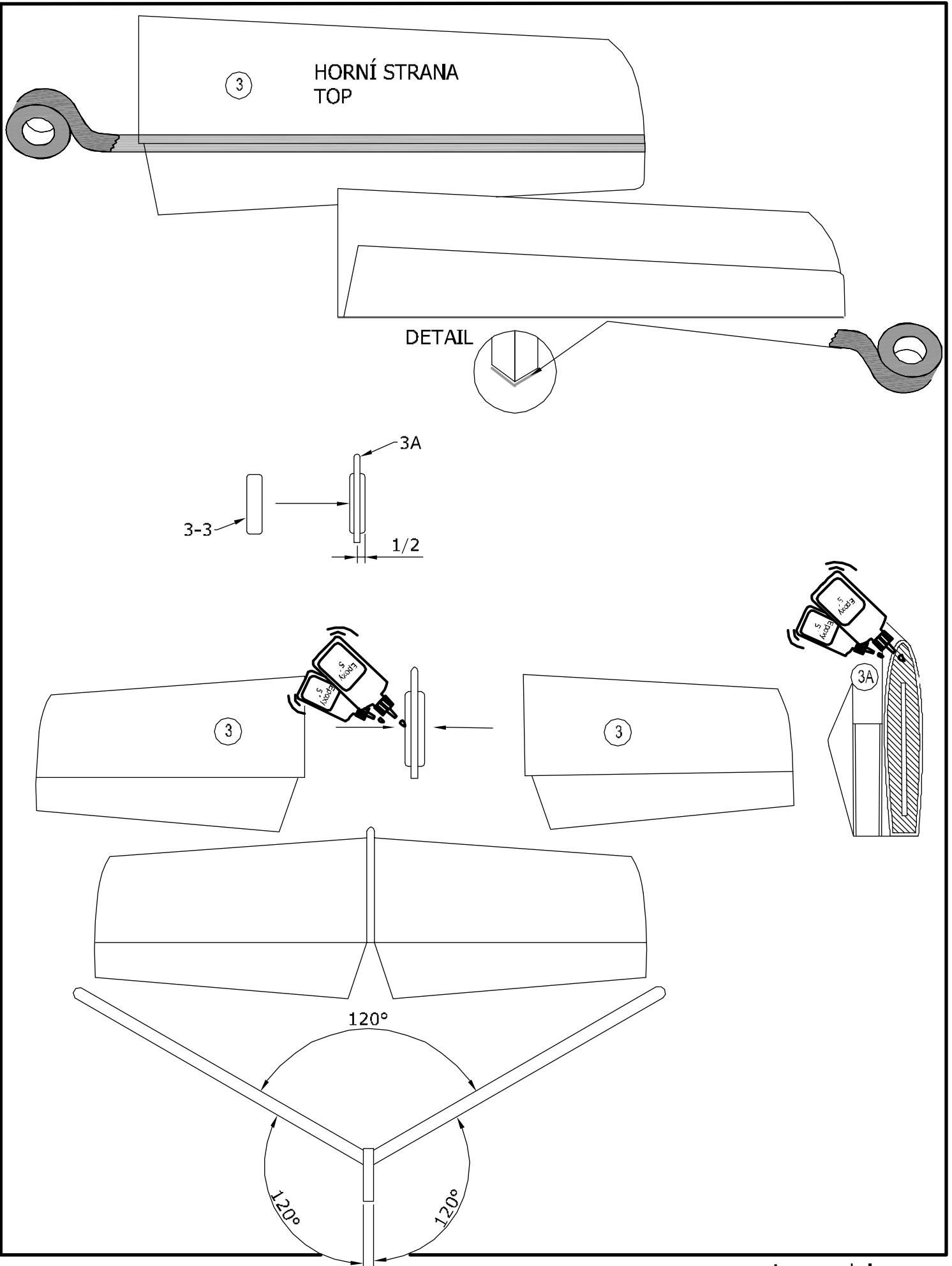


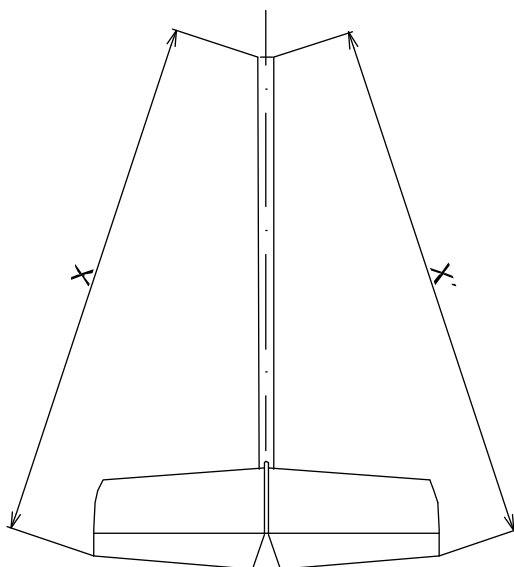
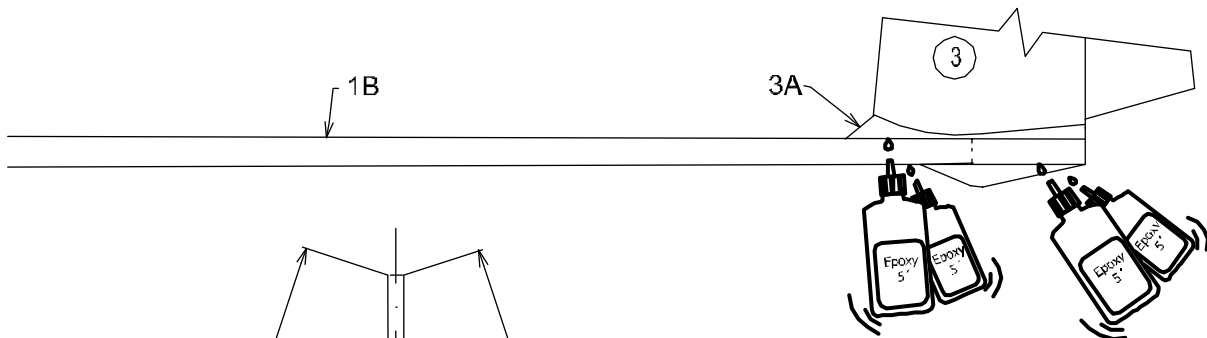
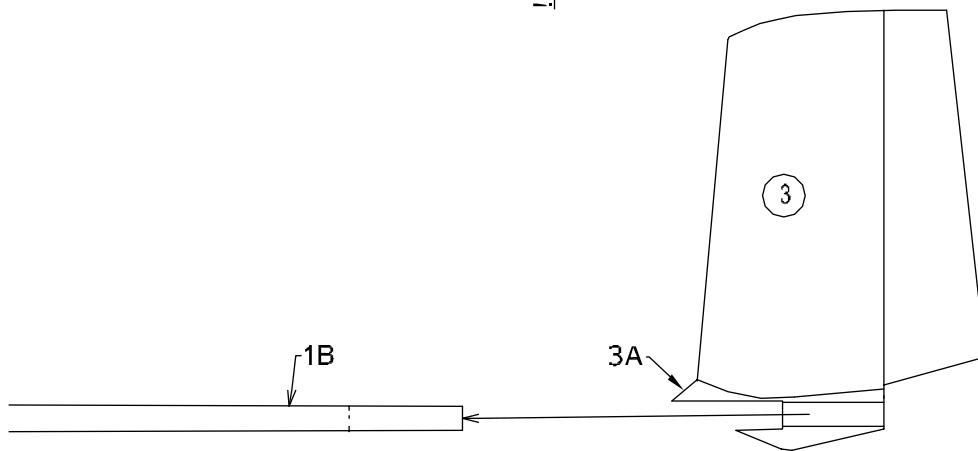
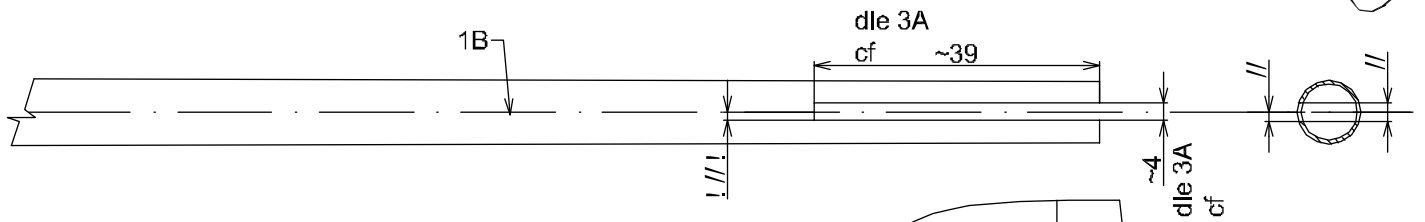
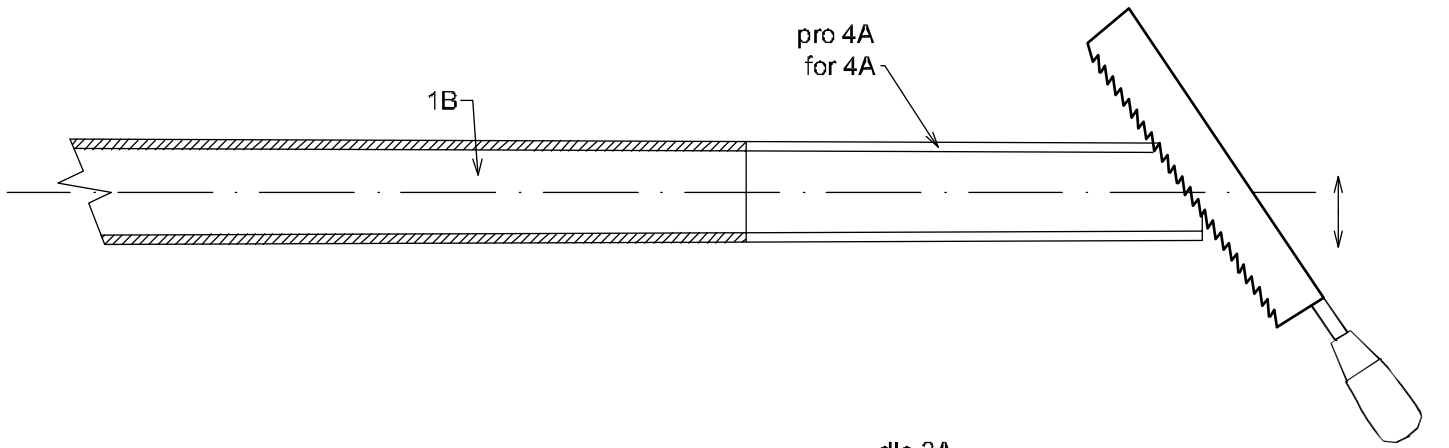


Pro serva křidélek
For ailerons servo

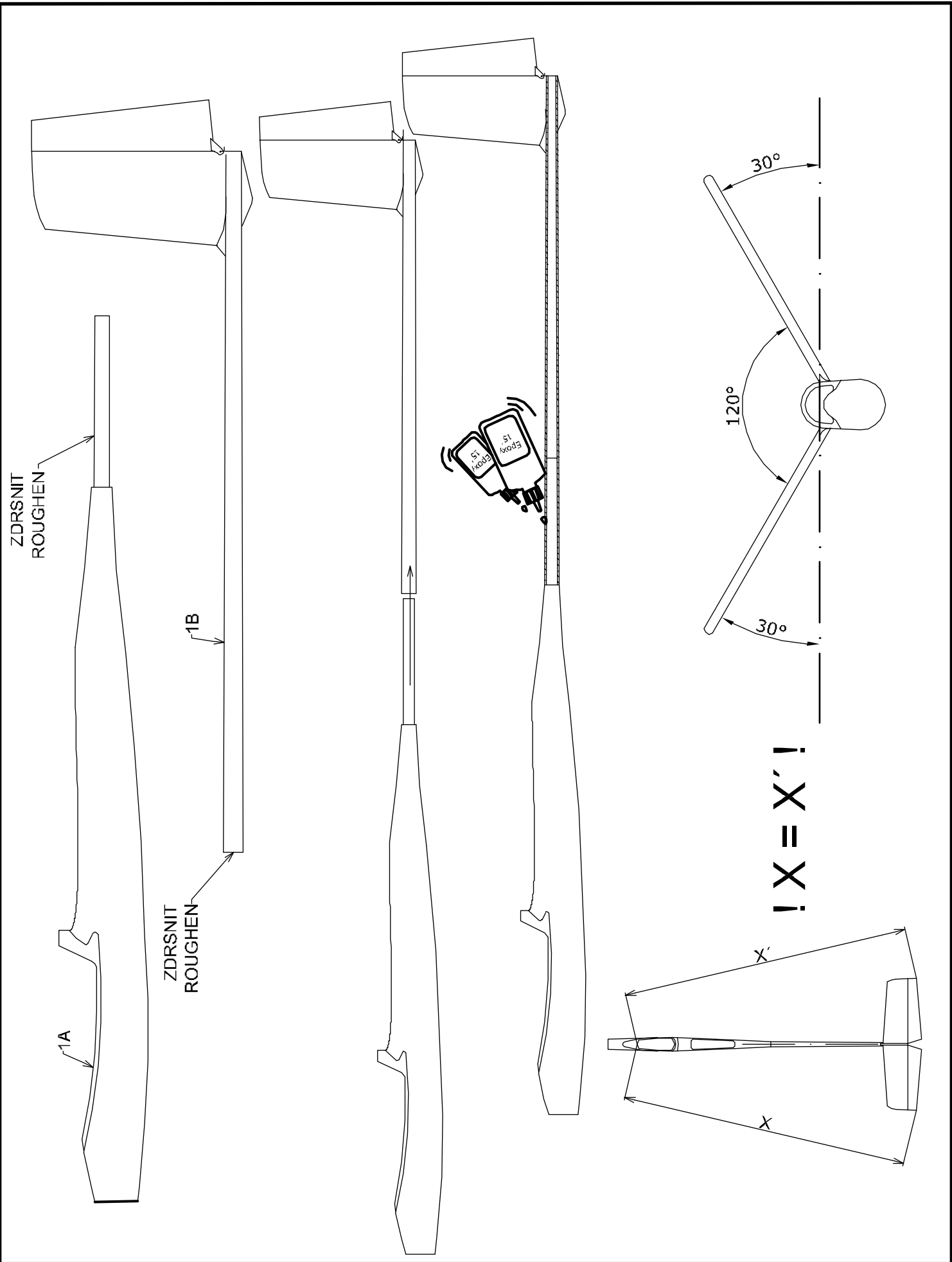


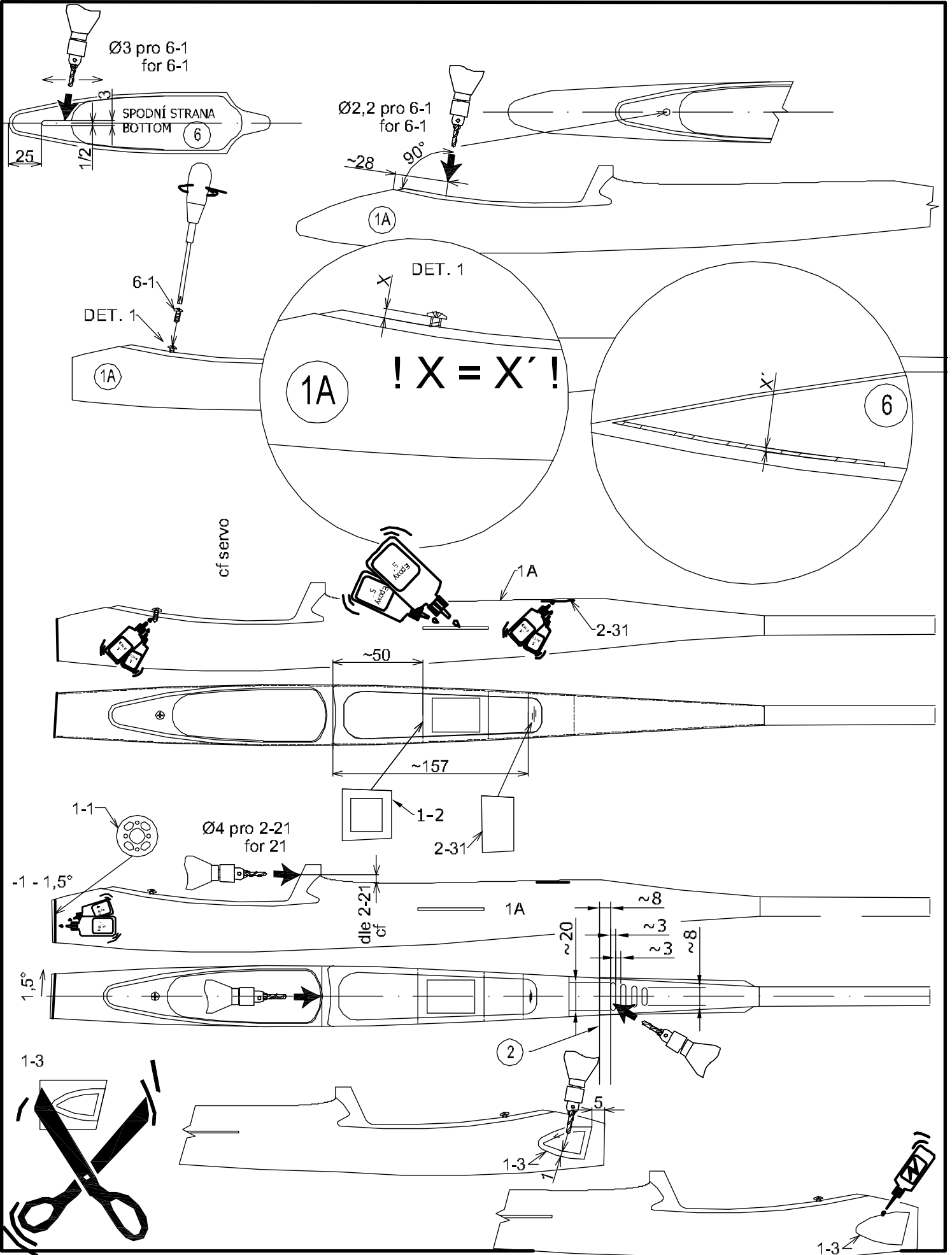


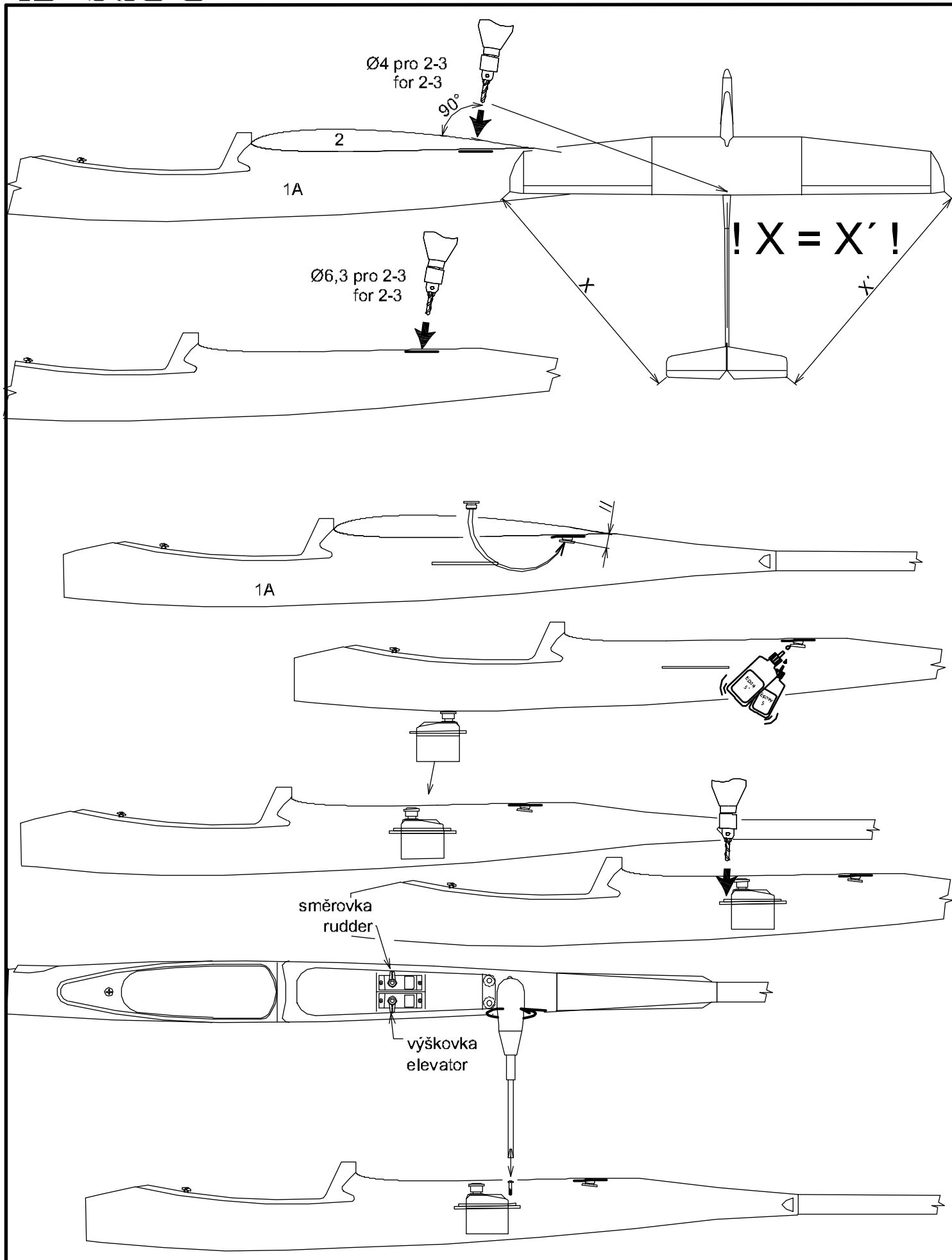


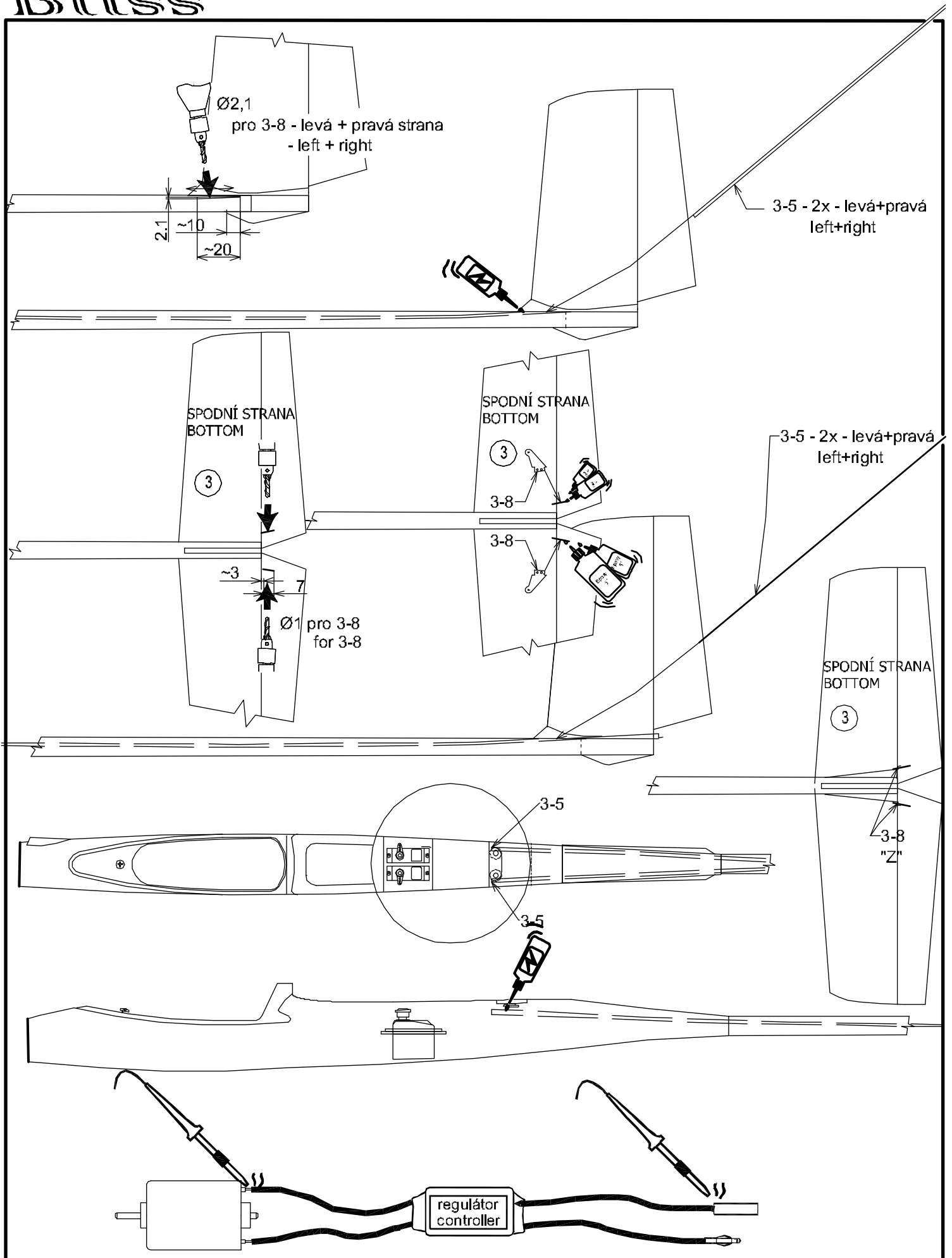


! X = X' !

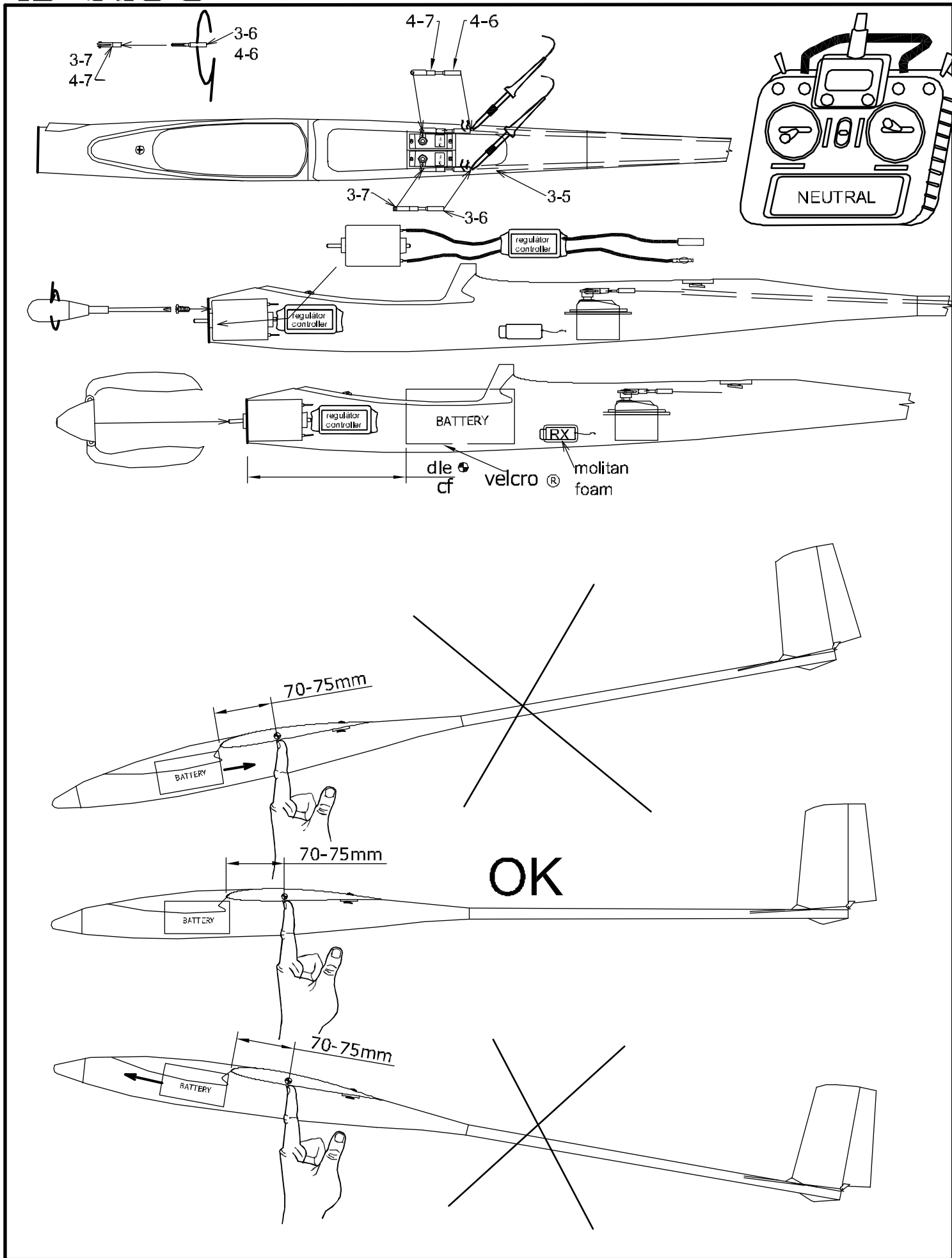


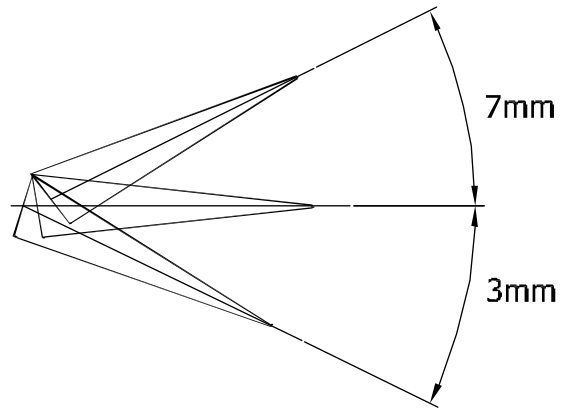
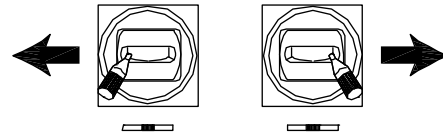
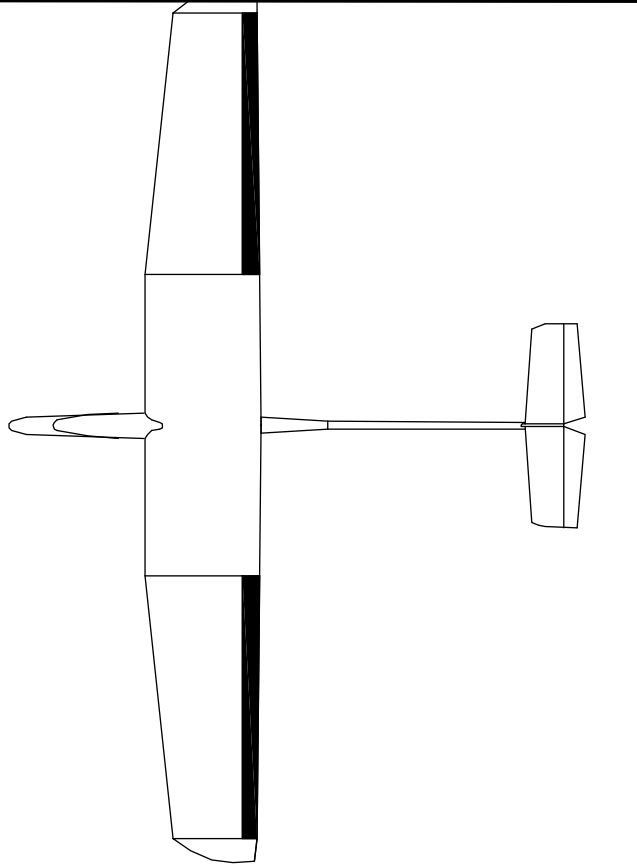






Bliss

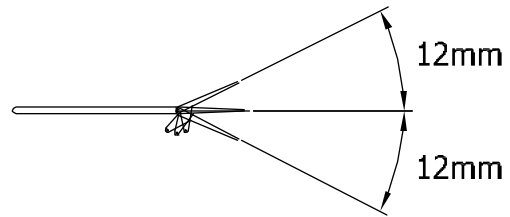
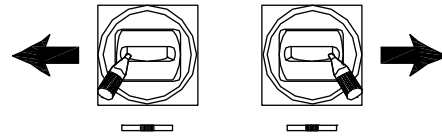
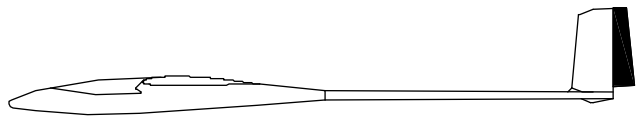




EXPO 30%

7mm

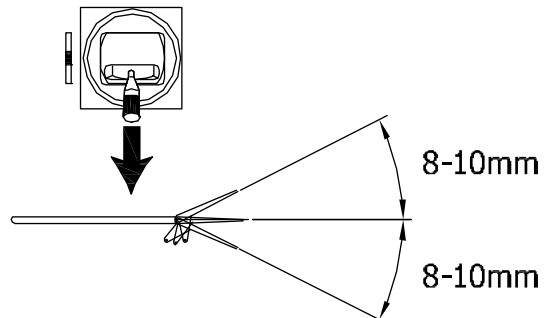
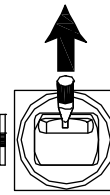
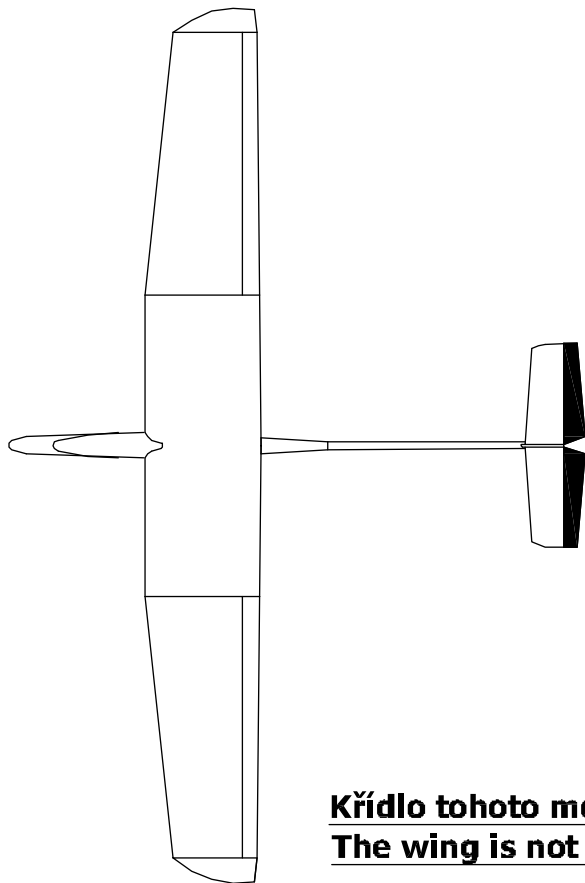
3mm



EXPO 30%

12mm

12mm



EXPO 30%

8-10mm

8-10mm

Křídlo tohoto modelu není dimenzováno k létání akrobacie!
The wing is not designed for aerobatics flying !